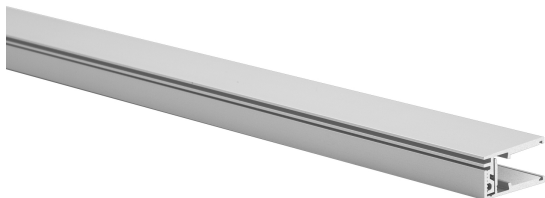


KRAV 810 profile



Basic info

KRAV 810 extrusion is dedicated to illuminate the edge of glass or acrylic, thickness of 8mm to 10mm. The advantages of the extrusion are: ability to adjust to the thickness of glass/acrylic; easy mounting of LED Tape and a solid, strong grip of the edge of glass/acrylic. Complete KRAV 810 extrusion consists of 2 extrusions: KRAV-D810 dedicated for mounting LED tape up to 10mm wide and KRAV-Z810 extrusion – the closing extrusion. Additionally the extrusions are equipped with mounting adhesive tape and a silicone strip that assures a solid connection of the two extrusions. KRAV 810 end caps consist of two overlapping parts that are assembled individually into the KRAV-D810 extrusion and KRAV-Z810. This type of end cap construction enables to hide the gap that is created when thicker glass is assembled into the extrusion. End caps can be mounted before or after the glass is inserted into the extrusion. This activity needs to be performed with care to avoid damaging the delicate grips of the end caps.

Technical parameters

IP degree	20 IP
Material	anodized aluminium
Length	1m, 2m, can be cutted on customer's order

Technical drawing

