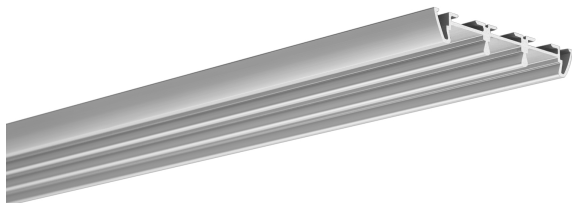


TRIADA profile HS 12 cover



Basic info

The three-channel extrusion is made from high quality, double-anodized aluminum, designed for flexible or rigid LED strips that are 8 - 12 mm wide. One of the accessories offered for the extrusion are covers that shade and protect LEDs inside the profile. There are a few types of covers: cover K12 (frosted or transparent) or HS12 (frosted or transparent). Covers are made of polycarbonate, and additionally, HS12 covers are certified for excellent resistance to all weather conditions, UV radiation as well as being flame retardant. Standard polypropylene end caps are used for the extrusion as supplementary accessories. End caps protect the extrusion from dust and other undesirable elements, which can make LED strips dirty and consequently deteriorate the lighting parameters. The extrusion can be mounted to surfaces with the use of double-sided adhesive tape, mounting glue or screws which guarantee easy and secure mounting of the extrusion to a desired surface. Installation of the profile in drywall is performed using special TR springs. If you would like to mount a profile in an Armstrong drop ceiling with the use of TR springs, you should additionally apply special safety washers. The extrusion with LED light source is mostly used as interior lighting, especially to light cabinets, glass-cases, or as a decoration light for a niche in drywall ceilings. Due to the possibility of installing three strips inside the extrusion it can be used as a primary energy-efficient light source.

Technical parameters

Variant	mleczna	przezroczysta
IP degree	20 IP	20 IP

Technical drawing

