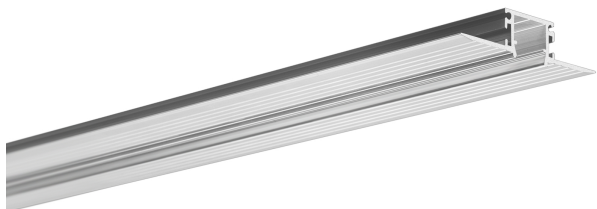


KOZMA profile HS cover



Basic info

KOZMA is small-sized profile for installation in grooves and to be covered with plaster. It creates narrow line of light. KOZMA-KPL extrusion can be applied indoor for drywall ceilings. It allows for creation of interesting compositions of narrow lines of light in the surfaces of walls and ceilings. Covering aluminium elements with plaster leaves only an elegant line of light. Extrusion comes with an additional working cover. It is inserted into the groove with the use of mounting glue (producer suggests GS 20 CEKOL) in a way that its wings adhere tightly to the surface of the ceiling. Then the net for covering with plaster is pasted on the wings and the plaster is applied and grinded. The base edge of the extrusion must remain untouched. The layer of paint is added next and the working cover is removed. The LED are pasted next and the final cover inserted.

Technical parameters

Variant	mleczna	przezroczysta
---------	---------	---------------

Technical drawing

